

# We Wanted You To Hear It First...

East Bay Regional Park District Supports YES on Y

NEWS RELEASE

EAST BAY  
Regional Park District

## EBRPD Will Accept Magee Acres of Open Space to Expand Sycamore Valley Open Space Preserve

NEWS RELEASE

EAST BAY  
Regional Park District

“The East Bay Regional Park District (EBRPD) will accept fee title and maintain into perpetuity 343 acres of newly donated open space to expand Sycamore Valley Open Space Preserve”

NEWS RELEASE

EAST BAY  
Regional Park District

“a total of 1,085 acres with over 3.5 miles of new trails of beautiful vistas of Mount Diablo and the Tassajara Valley.”

NEWS RELEASE

EAST BAY  
Regional Park District

“The Park District has been acquiring land to create Sycamore Valley Open Space Preserve, a gorgeous publicly accessible Danville park stitched together by land dedications from six different housing developers over the years”



## Vote YES on Y by Mail or on Tues., March 3.

Ad paid for by Yes on Y, a Coalition of Danville Environmental and Community Leaders; Committee major funding from Davidon Homes

Yes on Y  
3494 Camino Tassajara, #219  
Danville, CA 94506



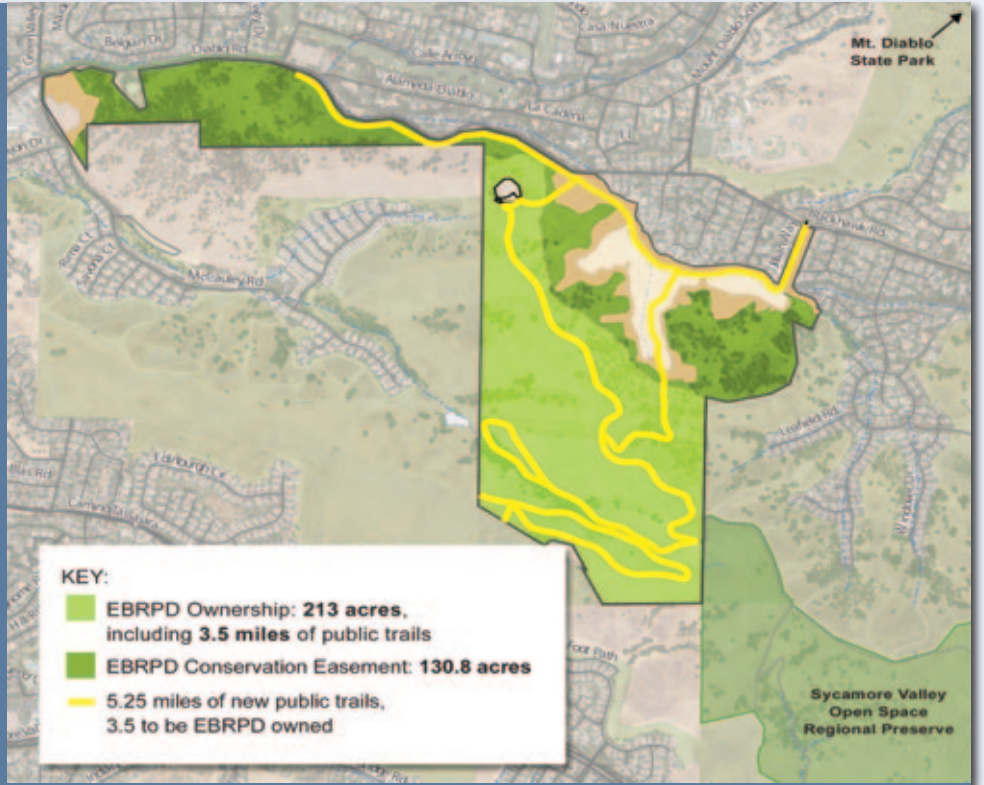
Proudly printed on Forest Stewardship Council (FSC) certified, chlorine-free and 100% post-consumer waste recycled paper.

PRESORT STD  
US POSTAGE  
PAID  
OAKLAND, CA  
PERMIT NO. 379

Y0Y\_13

# Only with YES on Y will the East Bay Regional Park District Own and Manage 343 Acres of Magee Preserve and New Public Open Space for All Danville Families to Enjoy for Generations to Come at No Cost to Taxpayers.

## Magee Preserve Land Dedication to East Bay Regional Park District



### ONLY YES ON Y...

- ✓ DELIVERS REZONING THAT REDUCES THE NUMBER OF HOMES FROM 78 DOWN TO 69 ON ONLY 7% OF THE PROPERTY.
- ✓ OFFERS PERMANENT ENVIRONMENTAL PROTECTIONS FOR 1.5 MILES OF GREEN VALLEY CREEK.
- ✓ GUARANTEES OVER 5 MILES OF NEW PUBLIC TRAILS AND FILLS CONNECTIONS TO THE TOWN'S AND EBRPD'S TRAIL NETWORK.



“The current Magee Preserve project is an example of thoughtful development. I support YES on Y as it maximized the protection of open space and provides for public access.”

**EAST BAY**  
Regional Park District

— Beverly Lane, Board Member\*  
East Bay Regional Park District



\*Title for identification purposes only.

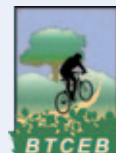
**TAKE A TOUR/GET THE FACTS!** Join Seth from Save Mount Diablo, SUN., FEB 23 or SAT. FEB 29 at 9 a.m. at Magee Preserve. Arrive by 8:30 a.m. Sign up at <http://bit.ly/SMD-Special-Events>

Unanimously Endorsed by the Danville Town Council, Supervisor Candace Andersen and Local Leaders We Trust

San Ramon Valley  
**DEMOCRATS**



DANVILLE  
Town Council



Danville  
SanRamon  
**Express**

**EAST BAY**  
Regional Park District

**VOTE YES ON MEASURE Y BY MAIL OR ON TUES., MARCH 3.**